



# HEATING MANTLES

Environment Friendly Engineering Solution Company



In Association with SVCH-Technologii, Moscow (Russia)

[www.kerone.com](http://www.kerone.com)

ISO 9001-2008 | ISO 9001-2015 | EMS 14001 | OHSAS 18001

# About Kerone

KERONE now renowned name in serving specialized need of customers with best quality and economical process Heating /cooling and drying products, manufactured in high quality environment by well trained and qualified workforce(special purpose machineries) .

KERONE is pioneer in application and implementation engineering with its vast experience and team of professionals. KERONE is devoted to serve the industry to optimize their operations both economically and environmentally with its specialized heating and drying solutions.

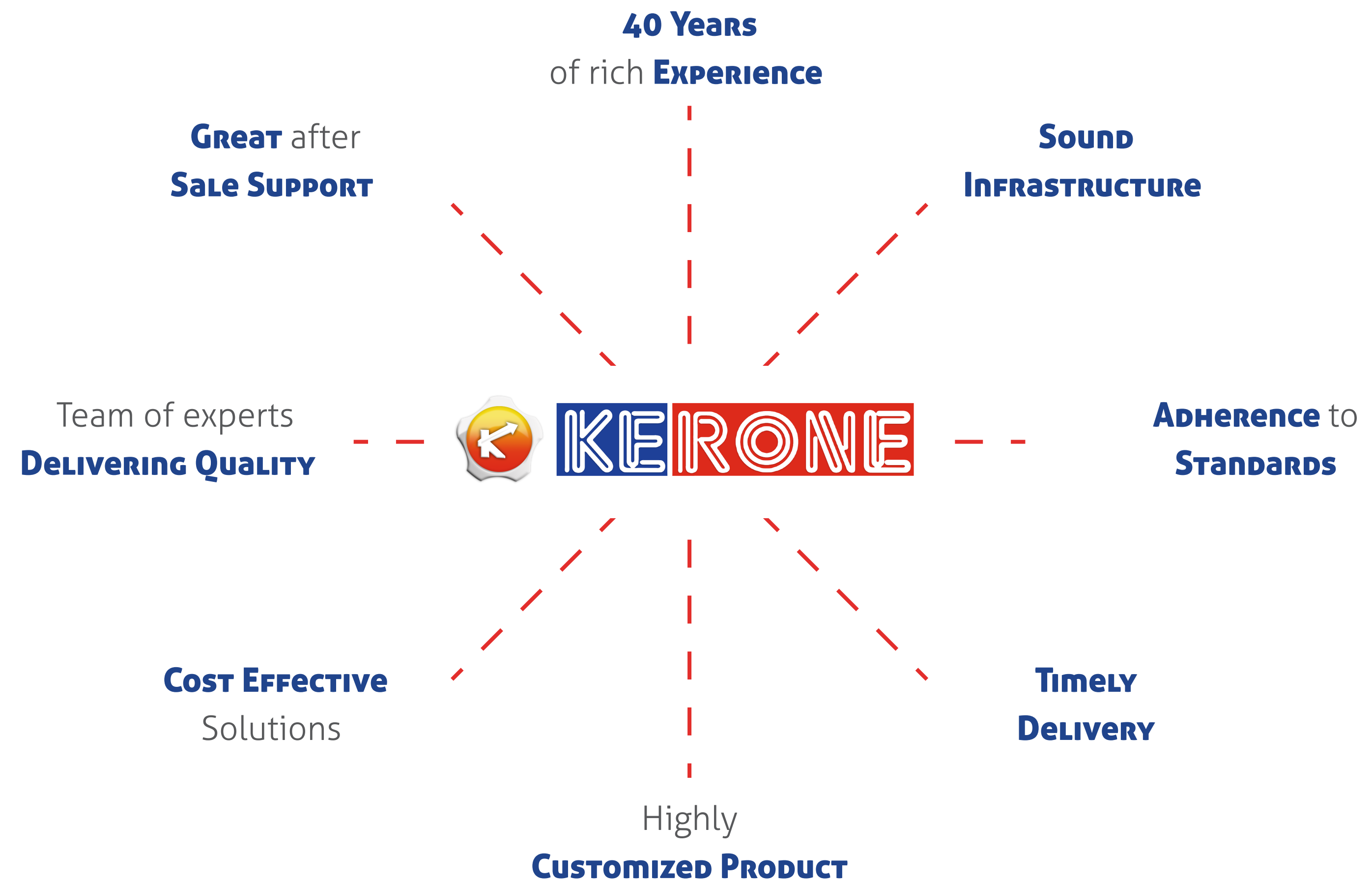
*“Enhance the value of customer operation through our customer need centric engineering solution”*

## ***Mission***

- To enhance the value of customer operation through our customer need centric engineering solution.
- We are committed to provide our customers, unique and best in class products in Industrial heating, drying and cooling segment, with strategic tie-up for the technical know-how with renowned leader in the industry specific segment.

## ***Vision***

- Turn into world leader in providing specialized, top-notch quality and ecological industrial heating, cooling and drying solution across the globe.
- To attain global recognition as best of quality and environment friendly engineering solution company.

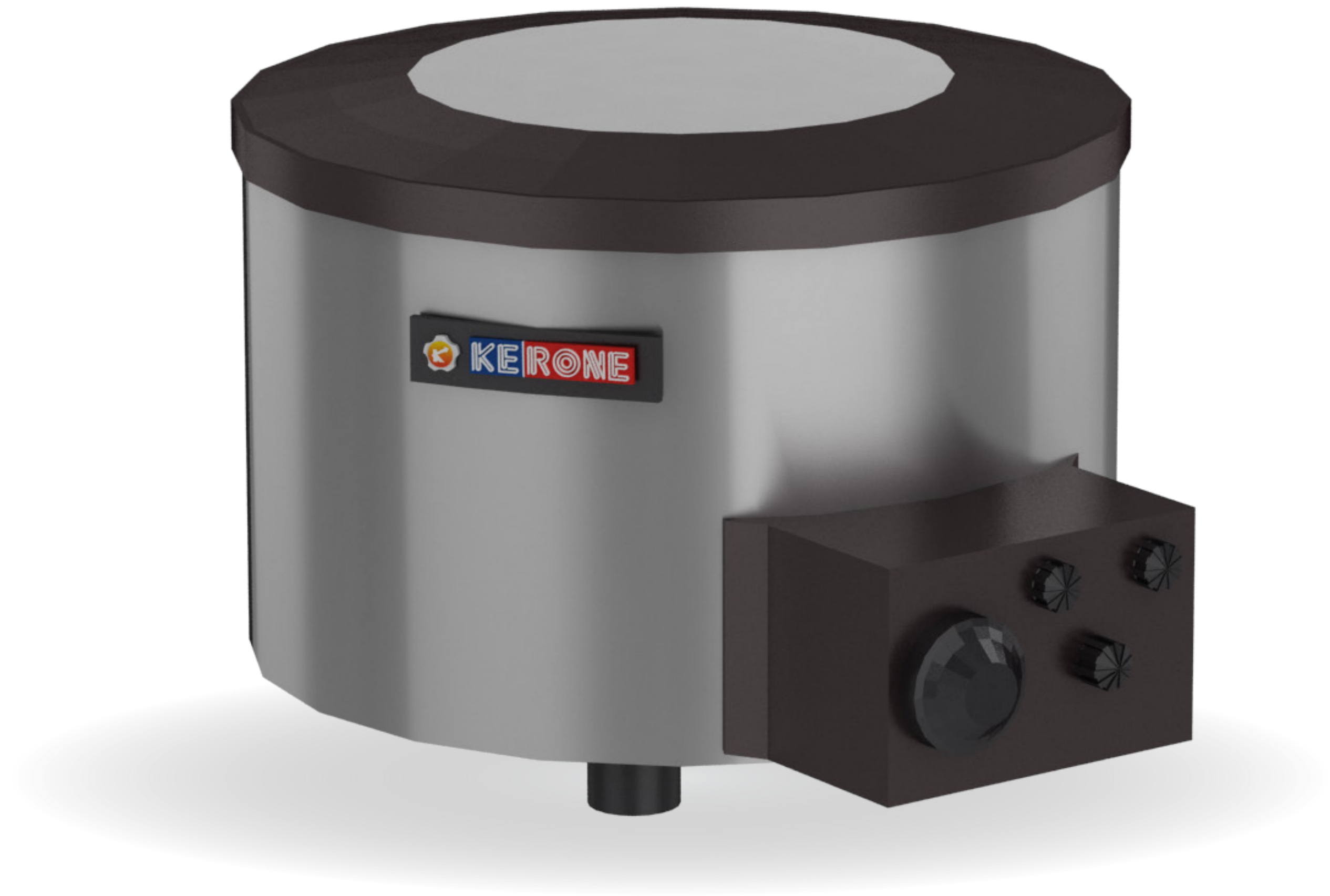


## Introduction to Heating Mantle

A heating mantle is laboratory equipments; those are used to uniformly apply heat to various lab, glassware vessels and containers, as an alternative to other forms of heated bath. Since the heating element of a heating mantle is insulated from the container so as to prevent excessive temperature gradients.

Heating Mantles have been designed to heat the flask containing samples which are organic liquids which can burst into flames on contact with direct flames or heat or release flammable vapors which are heavier than air and can explode on contact with open flames or heating coils. Heating Mantles have enclosed heating space to minimize such threats.

The Heating Mantles offered by KERONE in various special configurations. They are either available as one unit comprising of the mantle and integral controller device or as two separate units i.e. the mantle and the controlling device sold together.



**kerone/heating-manties**

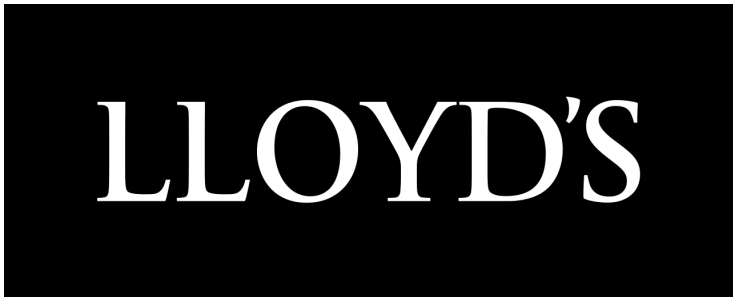
[www.kerone.com/heating-manties.php](http://www.kerone.com/heating-manties.php)

# 3D View



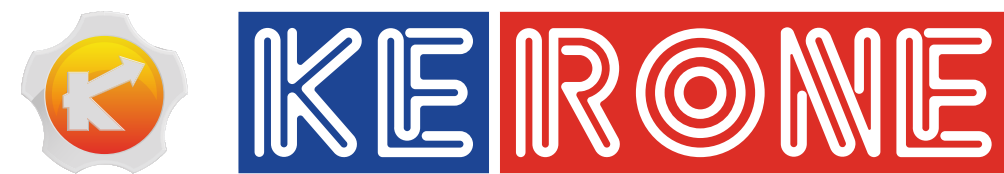


# Trusted Partner



# Our Clients



## UNIT I

B/10, Marudhar Industrial Estate, Goddev Fatak road, Bhayander(E), Mumbai-401105

Phone : +91-22-28150612/13/14

## EMAIL

info@kerone.com | sales@kerone.com  
marketing@kerone.com

## UNIT II

Plot No. B-47, Addl. MIDC Anandnagar, Ambarnath (East), Dist. Thane- 421506

Phone : +91-251-2620542/43/44/45/46

## WEBSITE

www.kerone.com | www.kerone.net  
www.keroneindia.com